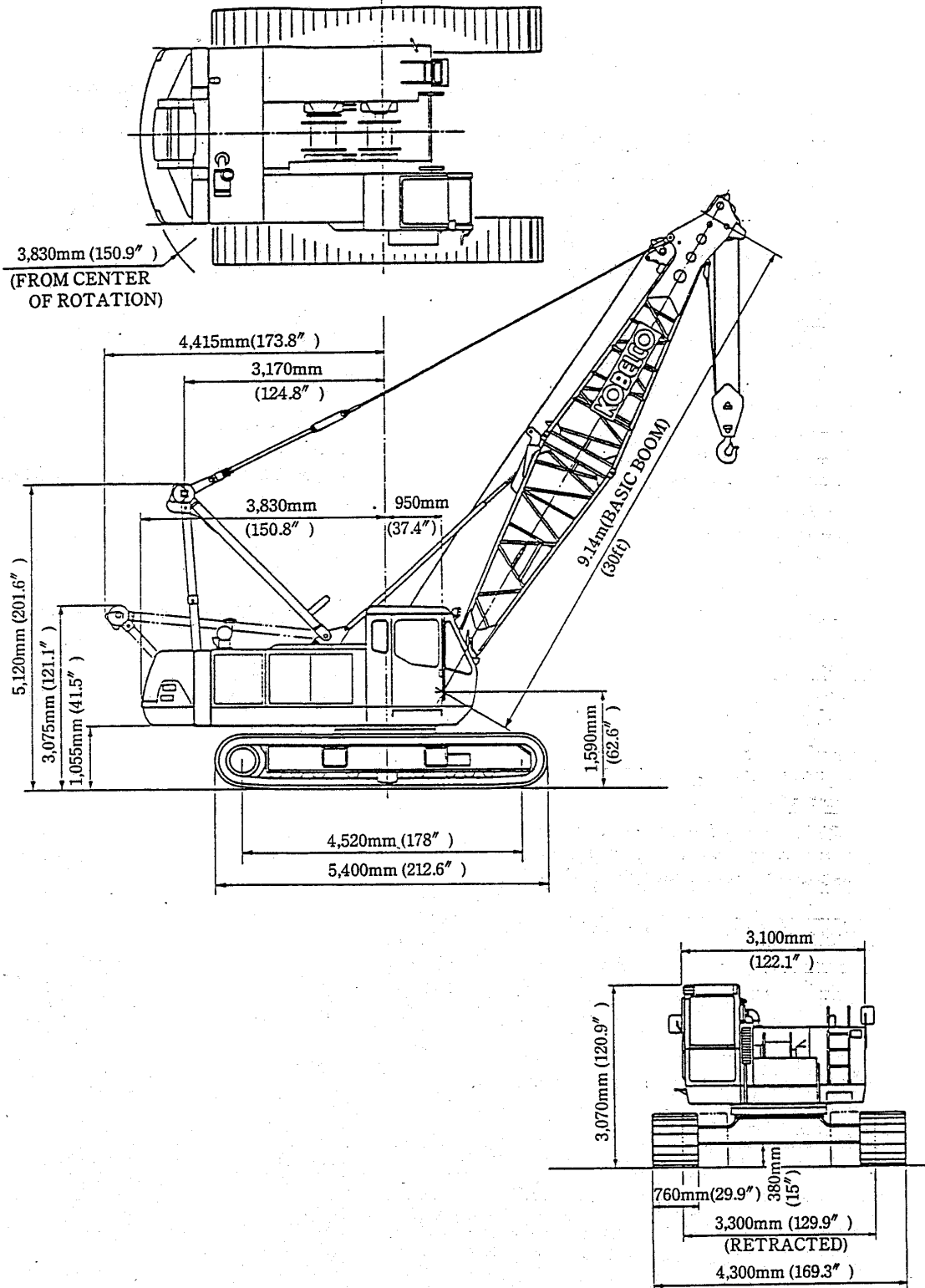


# KOBELCO

## KOBELCO CRANES CO., LTD.

### Specifications

7045



### Specifications

7045

Boom Rated Crane Loads with Auxiliary Sheave attached in Tons

Boom Length m (ft) Operating Radius m (ft)	(Unit: ton)														
	9.14 (30)	12.19 (40)	15.24 (50)	18.29 (60)	21.34 (70)	24.38 (80)	27.43 (90)	30.48 (100)	33.53 (110)	36.58 (120)	39.62 (130)	42.67 (140)	45.72 (150)		
3.5 ( 11.5)	44.85	44.85													
3.7 ( 12.1)	44.85	44.85													
4.0 ( 13.1)	41.35	41.25	41.15	4.3m/35.55											
4.5 ( 14.8)	35.55	35.45	35.40	35.35	4.9m/30.40										
5.0 ( 16.4)	29.90	29.80	29.75	29.65	29.60	5.4m/25.75									
5.5 ( 18.1)	25.75	25.65	25.60	25.50	25.45	5.9m/22.25									
6.0 ( 19.7)	22.60	22.50	22.40	22.30	22.25	22.20	22.15	6.5m/19.55							
7.0 ( 23.0)	18.10	17.95	17.90	17.80	17.75	17.65	17.60	17.50	16.95	7.5m/14.95					
8.0 ( 26.2)	15.05	14.90	14.80	14.75	14.65	14.60	14.55	14.45	14.35	14.35	8.1m/13.15	8.6m/11.25			
9.0 ( 29.5)	12.85	12.70	12.60	12.50	12.45	12.35	12.30	12.20	12.15	12.10	12.00	11.25	9.1m/10.55		
10.0 ( 32.8)		11.05	10.95	10.85	10.75	10.70	10.60	10.50	10.45	10.40	10.30	10.25	10.20		
12.0 ( 39.4)		11.6m/9.05	8.55	8.45	8.40	8.30	8.25	8.15	8.05	8.00	7.95	7.85	7.80		
14.0 ( 45.9)			7.00	6.90	6.80	6.70	6.65	6.55	6.45	6.40	6.30	6.25	6.20		
16.0 ( 52.5)			14.2m/6.80	5.75	5.65	5.55	5.50	5.40	5.30	5.25	5.15	5.10	5.05		
18.0 ( 59.1)				16.9m/5.35	4.80	4.70	4.65	4.50	4.45	4.40	4.30	4.20	4.20		
20.0 ( 65.6)					19.5m/4.30	4.05	3.95	3.85	3.80	3.70	3.60	3.55	3.50		
22.0 ( 72.2)						3.50	3.45	3.30	3.25	3.20	3.10	3.00	2.95		
24.0 ( 78.7)						22.2m/3.45	3.00	2.90	2.80	2.75	2.65	2.55	2.50		
26.0 ( 85.3)							22.2m/3.45	2.50	2.45	2.40	2.25	2.20	2.15		
28.0 ( 91.9)								27.4m/2.85	2.15	2.05	1.95	1.90	1.80		
30.0 ( 98.4)									1.90	1.80	1.70	1.60	1.50		
32.0 ( 105.0)									30.1m/1.85	1.60	1.45	1.30	1.25		
34.0 ( 116.0)										32.7m/1.50	1.20	1.20	1.00		

# KOBELCO

## KOBELCO CRANES CO., LTD.

### Specifications

7045

## 10. 1 SPECIFICATION

### 1. PERFORMANCE

Maximum lifting capacity	45.0ton×3.7m (99300lbs×12.14ft)	
Maximum boom length	Boom only	48.77m (160ft)
	Boom+jib	39.68m + 15.24m (130ft + 50ft)
Basic boom length	9.14m (30ft)	
Front and Rear Drum hoist rope speed	※70 / 35m / min (230 / 115ft / min)	
Front and Rear Drum lowering rope speed	70 / 35m / min (230 / 115ft / min)	
Boom hoist rope speed	※68m / min (223ft / min)	
Boom lowering rope speed	68m / min (223ft / min)	
Swing speed	3.5rpm	
Propel speed	※1.4km / h (0.9mile / h)	
Ascendability (percent of grade)	21.5° (40%)	
Working weight (with basic boom attached)	45ton (99300lbs)	
Ground pressure (with basic boom attached)	0.61kg/cm <sup>2</sup> (0.87psi)	
Engine	Mitsubishi 6D15-T 155ps / 2150rpm	

※ NOTE 1. Speed varies according to load.

NOTE 2. Rope speed is drum first layer speed.

### 2. GENERAL DIMENSIONS (See Figure 10-1)

Unit : mm (inc)

Width of cab	3,100 (122.1)
Radius of rear end (with counterweight)	3,830 (150.9)
Radius of rear end (gantry lowered)	4,415 (173.8)
Height from ground to boom foot pin	1,590 ( 62.6)
Distance to boom foot pin (from center of rotation)	950 ( 37.4)
Clearance height over gantry (working position)	5,120 (201.6)
Clearance height over gantry (lowered gantry)	3,075 (121.1)
Rear end clearance height (counterweight)	1,055 ( 41.5)
Overall length of crawlers	5,400 (212.6)
Center to center of propel sprockets	4,520 (178.9)
Overall width of crawlers (extended / retracted)	4,300 / 3,300 (169.3 / 129.9)
Width of crawler shoe	760 ( 29.9)
Ground clearance	380 ( 15.0)